



**Committed to logistics robot technology solutions
from factory to consumer and from field to table.**



About Us

WIT-SKILL is a technology enterprise specializing in the R&D and sales of logistics robot products. It mainly provides logistics robot technology solutions for the manufacturing, retail, and circulation industries.

Based in Guangzhou, China, the company has established a logistics robot product R&D center and a delivery base, offering customers technical services covering the entire product life cycle from product development, manufacturing, delivery to after-sales service, and continuously outputting advanced robot technologies and solutions to the industry.

Mission

Committed to upgrading the logistics automation technology for the last 50 meters in the factory.

Vision

Realize the robotization and unmannedization of commodity logistics

Core Values

Value: Create value for customers and fulfill customers' ideals.

Innovation: Continuous transformation, continuous innovation.

Striving: Unity and mutual trust, striving for progress, fearlessness in the face of hardships, and the pioneering spirit.

Sharing: Co-construction, co-responsibility, and sharing, and sharing the achievements of enterprise development with all employees.

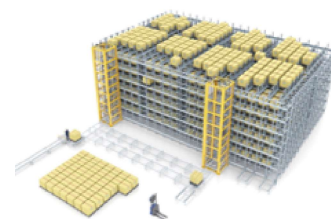
Committed to logistics robot technology solutions from factory to consumer and from field to table.



Automatic picking system

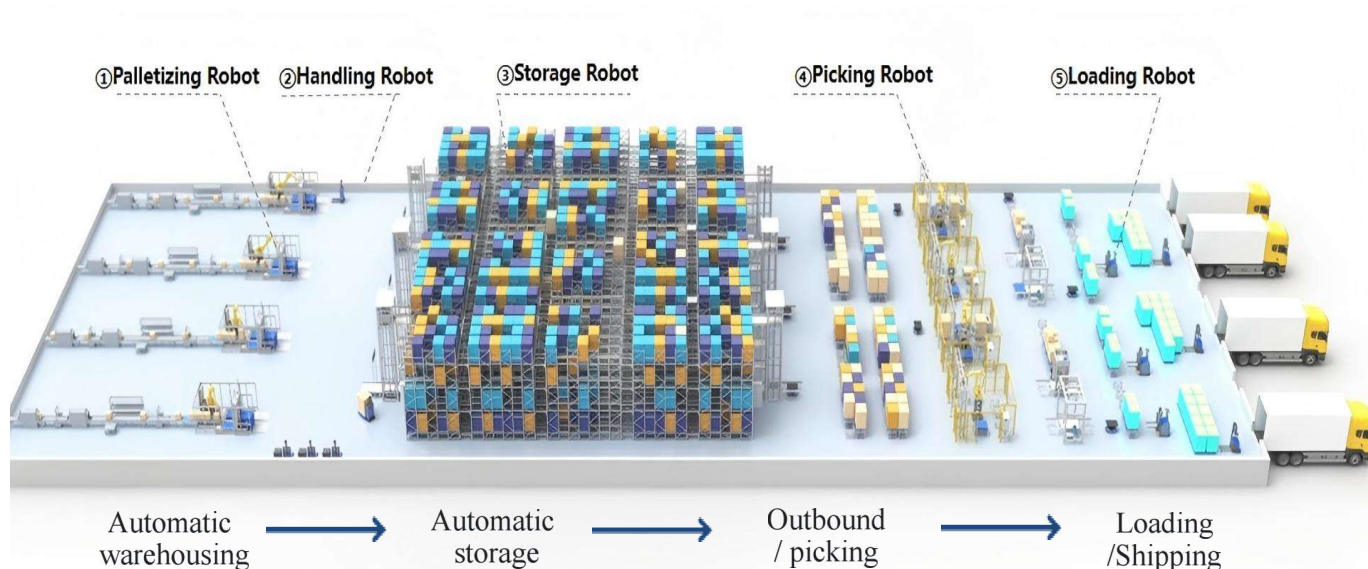


Mobile handling system



Automated storage and retrieval system

Core Products



Logistics robot technology solutions



Picking Robot Solution

- Automatic palletizing and outbound picking system.
- It is applied in the inbound and outbound links to realize intelligent picking and mixed palletizing operations of multi-SKU goods.
- Applicable to industries such as food, beverages, daily necessities, wines and spirits, pharmaceuticals, and retail.



Mobile handling robot solution

- **Mobile handling robot system.**
- **Realize the automatic handling of pallets and bins.**
- **Applicable to industries such as food, beverages, daily necessities, chemicals, white spirits, pharmaceuticals, and retail.**



Storage robots of integrated solution

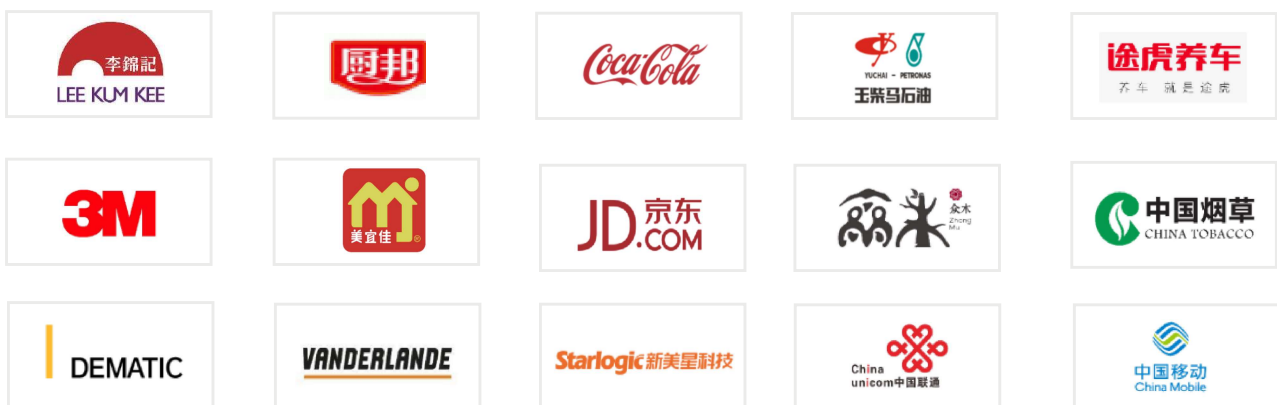
- **Pallet storage robot system.**
- **Realize high-density automatic storage and retrieval in warehouses.**
- **It is applicable to industries such as food, beverages, daily necessities, chemicals, white spirits, pharmaceuticals, retail, etc.**



Delivery and after-sales support capabilities

We provide customers with full-life-cycle services for products, ranging from project planning, design, manufacturing, delivery to after-sales service. Our R&D and delivery center covers an area of 3,000 square meters and has obtained certifications such as ISO9001:2015 International Quality Management System and ISO14001:2015 International Environmental Management System. We adhere to scientific management methods and implement lean production to ensure product delivery and service capabilities.

Key Customers





Guangzhou WIT-SKILL Intelligent Technology Co., LTD

No.16,LiYe Rd.NanSha Dist,Guangzhou,China

Tel: (020)400-025-8418

E-mail: info@wit-skill.com

Website: <https://wit-skill.com>

